



## Easy Setup Plug N Fax



The myFAX network fax server was designed to meet the needs of small to mid-sized businesses or workgroups. myFAX network fax server comes with all the necessary hardware and software to allow network users to send and receive faxes from the desktop or browser.

It is a turnkey solution that connects to PSTN fax lines. myFAX network fax server converts faxes to TIFF files allowing you to receive faxes wherever you are, as e-mails or desktop and send faxes from any application that can print . The system , provides distributed faxing capabilities, over a WAN, from a corporate office to small remote offices as well as to field sales people. In addition, it provides secure convenient faxing for LAN users offering a high degree of privacy for both the sender and recipient . myFAX provides both software and web management interface.

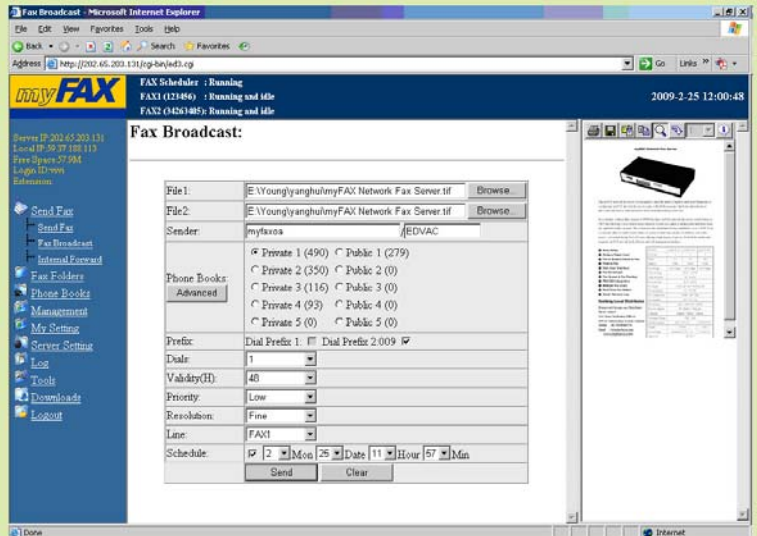
# myFAX Function:



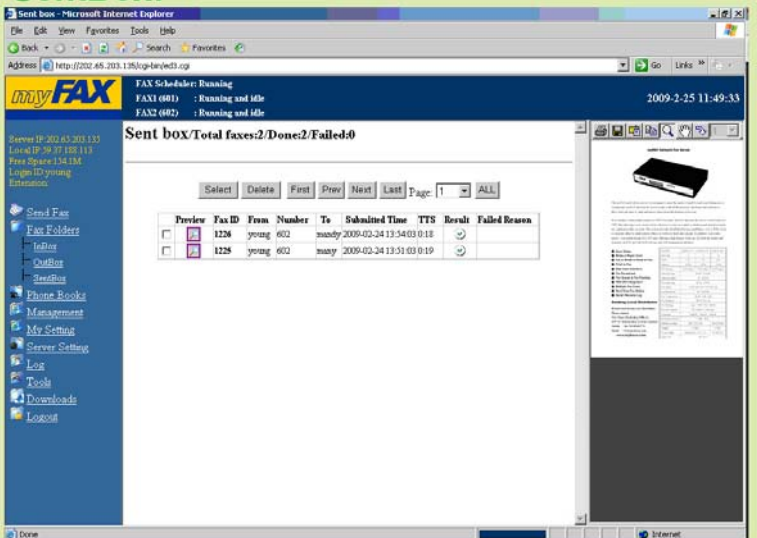
## Send and Receive Fax

- **Automatic Format Conversion**  
The user can send fax by select myFAX printer to convert the current document to fax format.
- **Fax Queue**  
All faxes will be queued within myFAX fax queue. It has priority code to indicate the priority of the fax. Urgent fax will send out by next available line.
- **Delay Fax Sent**  
Users can send faxes by specified time.
- **Fax Broadcast**  
Users may also be able to send the fax document to a number of different users. Fax Broadcast result can export to Excel format.
- **Fax Resend**  
When the fax destination is busy or no answer, myFAX will queue for resend. Users can set up the retry times in the software.
- **Inbound Fax Routing**  
myFAX will route the fax according to sender's input of the fax mailbox number and automatically route to users mailbox. If the sender did not enter fax mailbox number, it will automatically sent to the fax administrator for manual routing. Administrator can also apply the CSID and line routing for fax delivery.
- **Internal Transfer**  
All faxes can be transfer internally. Just select the user's name on the list.
- **Fax Status**  
The system automatically indicate real time fax status on top of web interface. It helps user to identify the fax line situation.
- **Fax to Email**  
All received fax will be automatically send to user's folder. It also can setup to send to email account by attachment with TIFF or PDF format.
- **Email to Fax**  
User can send fax from anywhere with internet connection. Just add the attachment to email and our fax server will automatically converts your email into fax and forwards it to the destination fax machine.
- **Fax to Print**  
All received faxes can be printed out automatically.
- **Fax to Folder**  
The sent and received faxes will be stored in any share folder specified by user.

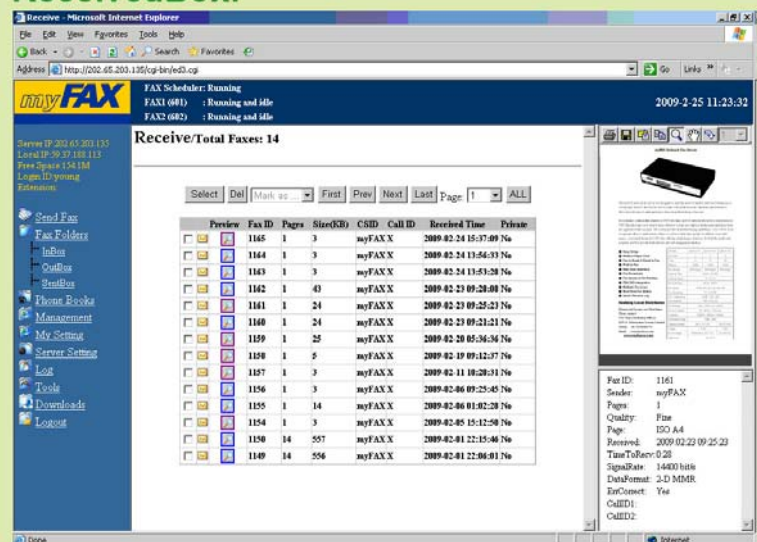
## Fax Broadcast:



## SentBox:



## ReceivedBox:





# myFAX Function:



## Print2Fax:

myFAX allows users to compose a fax from any application that utilizes a printer. To send, users simply "print" the document to the application. Let sending fax is easy as printing.

### Print2Fax Interface:

**Configure FAX Client**  
myFAX Network Fax Server

FAX Server Address: 192.168.1.200 Line: Any

Ignore PASV IP address:  Page Size: A4

Username: user Resolution: Fine

Password: \*\*\*\*\* Max Dials: 2

Sender: TESTER Max Tries: 2

Advertising: EDVAC Priority: Normal

Address Book Format: Two Text Files Validity: 3 hours

Address Book Directory: c:\mf Job Confirm:

OK Cancel

**Send FAX To**

Document: installation\_instructions.pdf

FAX Number: 12345678 Save Number

faxtest Delete Entry

Sender: TESTER

Line: Any

Resolution: Fine

Priority: Normal

Send Cancel

## Email to Fax:

Validation code,Account,Sender,Receiver@fax Number

To: myfax@myfaxoa.com

Cc:

Subject: Validation code,Account,Sender,Receiver@fax Number

Attach: Fax file.tif (7.27 KB)

Email to Fax

## System and Management

### User Management

Administrators can set up different user accounts passwords, management authority, attributes ,lines ,document format and email address.

### Address Book

myFAX has its own address books – both shared and private to each user. Contacts may be grouped together into fax lists for rapid dissemination of information using just a few clicks.

### Fax Monitoring

Administrators can monitor all incoming or outgoing faxes.

### System Log

myFAX provides various system log for administrator. Included user login and modify log, fax sent log, received fax log, fax distribution log and internal transmit log. All logs can export to excel format.

### User Management:

myFAX User Management interface showing user details for 'young'.

**User Management - Users: 45**

Basic: Name: young, Department: Default, Login ID: young, Password: \*\*\*\*\*

SMTP: Default SMTP:  (Setup in admin), SMTP Server: mail.myfaxoa.com, Account: myfax@myfaxoa.com, Password: \*\*\*\*\*

FaxFolder: Default FaxFolder:  (Setup in admin), Share: Fax Backup, Host IP: 192.168.1.116, Workgroup: young, Account: young, Password: \*\*\*\*\*

Name	Login ID	Department	Ext	Line	Server Setting	Fax Manager	Admin	Default SMTP	Fax2 Email	Notify	Default FaxFolder
young	young	Default	NA	Custom	Yes	No	Yes	No	No	No	No

### Sent Log:

myFAX Sent Log interface showing a list of sent faxes.

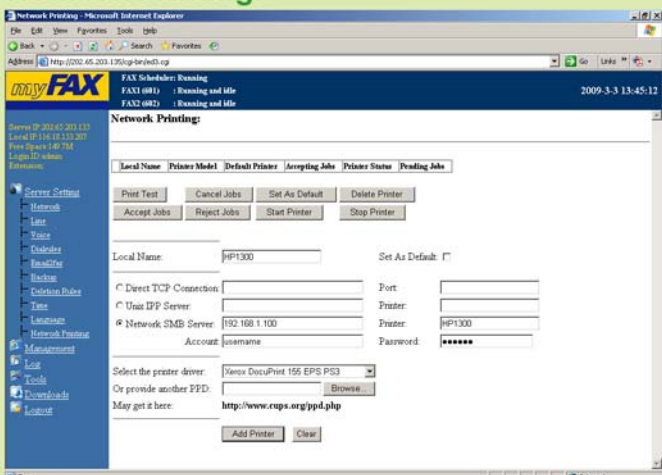
**Sent Log/Total faxes:206/Done:140/Failed:66**

FaxID	Sender	Recipient	Number	CSD	Line	Page	Speed	Format	Quality	Submitted Time	Great Time	TTS	CommID	Result
1026	Jean Francois	Allie Chang	602	myFAX FAX1	1	1400	3-D	late	MMSR	2008-07-02 22:12:59	07-02 22:13:40	0:20	000000077	Done
1025	Jean Francois	Allie Chang	601	myFAX FAX2	1	1400	3-D	late	MMSR	2008-07-02 22:10:16	07-02 22:11:04	0:20	000000075	Done
1024	Jeanf.	Judi	602	myFAX FAX1	1	1400	3-D	late	MMSR	2008-07-02 21:23:07	07-02 21:27:51	0:18	000000073	Done
1023	Jeanf.	Judi	601	myFAX FAX2	1	1400	3-D	late	MMSR	2008-07-02 21:05:34	07-02 21:06:21	0:18	000000070	Done
1022	Comm@myfaxoa.com	Jeanf.	602	FAX2	1	1400	3-D	late	MMSR	2008-07-02 20:44:42	07-02 20:52:32	0:00	000000069	Failed
1021	Comm@myfaxoa.com	Jeanf.	80081517	FAX1	1	1400	3-D	late	MMSR	2008-07-02 20:36:30	07-02 20:41:05	0:00	000000066	Failed
1020	J.	ghdyl	602	myFAX FAX1	1	1400	3-D	late	MMSR	2008-07-02 11:35:09	07-02 11:37:31	0:18	000000063	Done

### Main Feature

- Easy Setup**  
 myFAX network fax server is integrated in a box. No technical skill is required to setup the server.
- Desktop Faxing**  
 myFAX network fax server allows you to deploy faxing to your entire user base so that they can send and receive faxes while sitting at their desks.
- Operate Independently**  
 System running completely out of the computer. No server side software required. Fax stored in myFAX network fax server.
- PBX Integration**  
 After installing myFAX behind PBX, It is able to listen DTMF code generated from PBX system. So fax can be delivered via PBX setting or analog DID/DDI service.
- Network Fax Sharing**  
 myFAX runs in TCP/IP network. User can share faxes and files within local LAN or even internet. It save time to deliver fax and save cost as well.
- CSID Support**  
 User can identify the source of fax. It help to manage faxes more intuitive and more convenient
- Caller ID Support**  
 Route all matched CID (telephone number routing) faxes to specify the user.
- Fax Backup**  
 Fax Backup allows to store and backup the received or sent faxes to any share folder in server or PC automatically.
- Network Printing**  
 It supports the received faxes to be printed out via network printing automatically.

### Network Printing:



### Product Specifications:

MODEL	myFAX150	myFAX250	myFAX450
Fax Line	1	2	4
Max. User	20	50	100
Memory	256M	256M	512M
Fax Storage	4000pages	4000pages	8000pages
Network Protocol	TCP/IP		
Network Interface	RJ45		
Network Speed	10/100M		
Fax Line Interface	RJ11		
Fax Line Type	PSTN		
Fax Speed	14.4K / 12K / 9.6K / 7.2K / 4.8K / 2.4K		
Fax Resolution	98 / 196DPI		
Fax Compression	MMR,MR,MH		
Fax Standard	ITU-T G3 / G4		
Fax Routing	Line / CSID / Extension / Caller ID		
DID/DDI Digit	(User Define 1,2,3,.....,25)		
OS Support	MS Windows / Mac / Linux		
Browser Support	IE / Firefox / Netscape		
Language	English ,Chinese, French		
Remote Access	Support		
Document Format	TIFF/ PDF		
Rack Mount	No	Yes	
Dimension (mm)	280X150X45		450x235x45
Power Supply	External 12V DC, 1A		90-240VAC
Weight	1.8KG	2.0KG	3.7KG
Approval	CE , FCC		

myFAX150 BackPanel:



myFAX250 BackPanel:



myFAX450 BackPanel:

